



**3DEXPERIENCE**

# DELTA GEN 2017

SMART DESIGN FLOW FOR BOUNDLESS CREATIVITY



## SMART DESIGN FLOW FOR BOUNDLESS CREATIVITY

3DEXCITE DELTAGEN is the world's leading high-end 3D visualization software that delivers a lifelike display of CAD data with real-time interaction. Packed with new features that optimize the design flow from CAD to sophisticated visual results, DELTAGEN 2017 takes your high-end 3D visualization beyond the imaginable. The wide array of robust enhancements

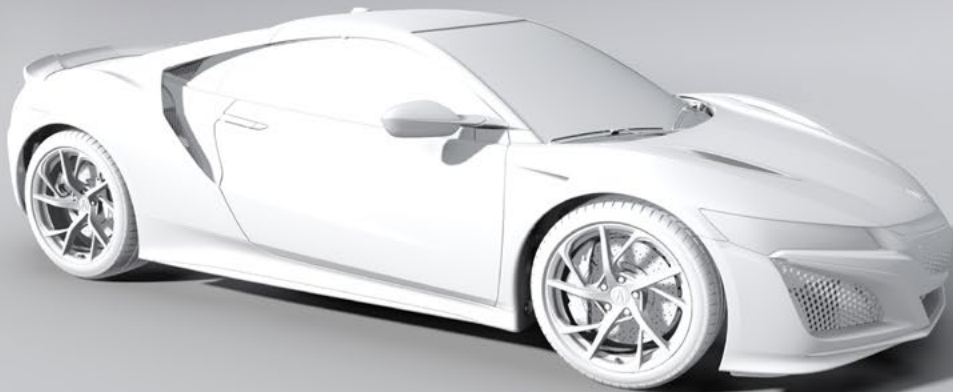
and new features includes Live Update and Autopaint, as well as Automatic Jacketing, amongst many others. Enjoy the latest in Stellar render technology with instant real-time soft shadows for the model in Rasterizing mode and achieve desired interactive scene results with minimal preparation time.



## HIGH QUALITY REAL-TIME SHADOW

In DELTAGEN 2017 the Stellar render engine is enhanced with a high quality instant real-time shadow for the Rasterizer mode. Instant means the final shadow quality of a complete model is available in a couple of seconds. This advanced new shadow technology is designed for scenarios where you need good visual quality in an interactive, complex real-time

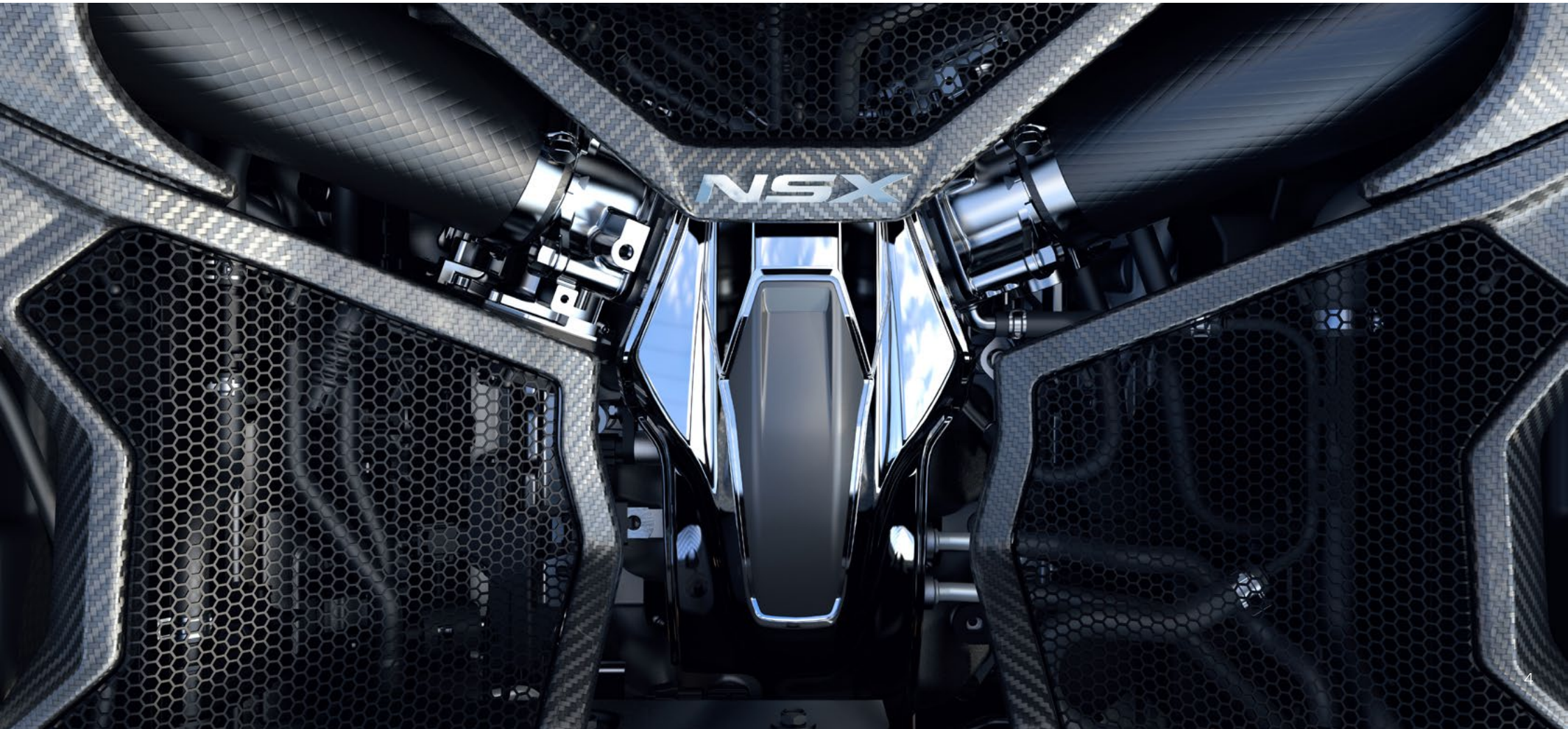
scene with minimal preparation time. The new shadow solution in the Stellar render engine is also designed for supporting multisegment displays (like Powerwall).



## LIVE UPDATE AND AUTOPAINT

Live update makes data preparation using imported files much more convenient, as it accelerates the process of updating the visualization assets generated with DELTAGEN. This significantly reduces the time required for generating updated visualization assets and extends the application area of DELTAGEN to use cases requiring frequent updates. With this feature enabled, you can monitor the status of files on a disk and take action when they have

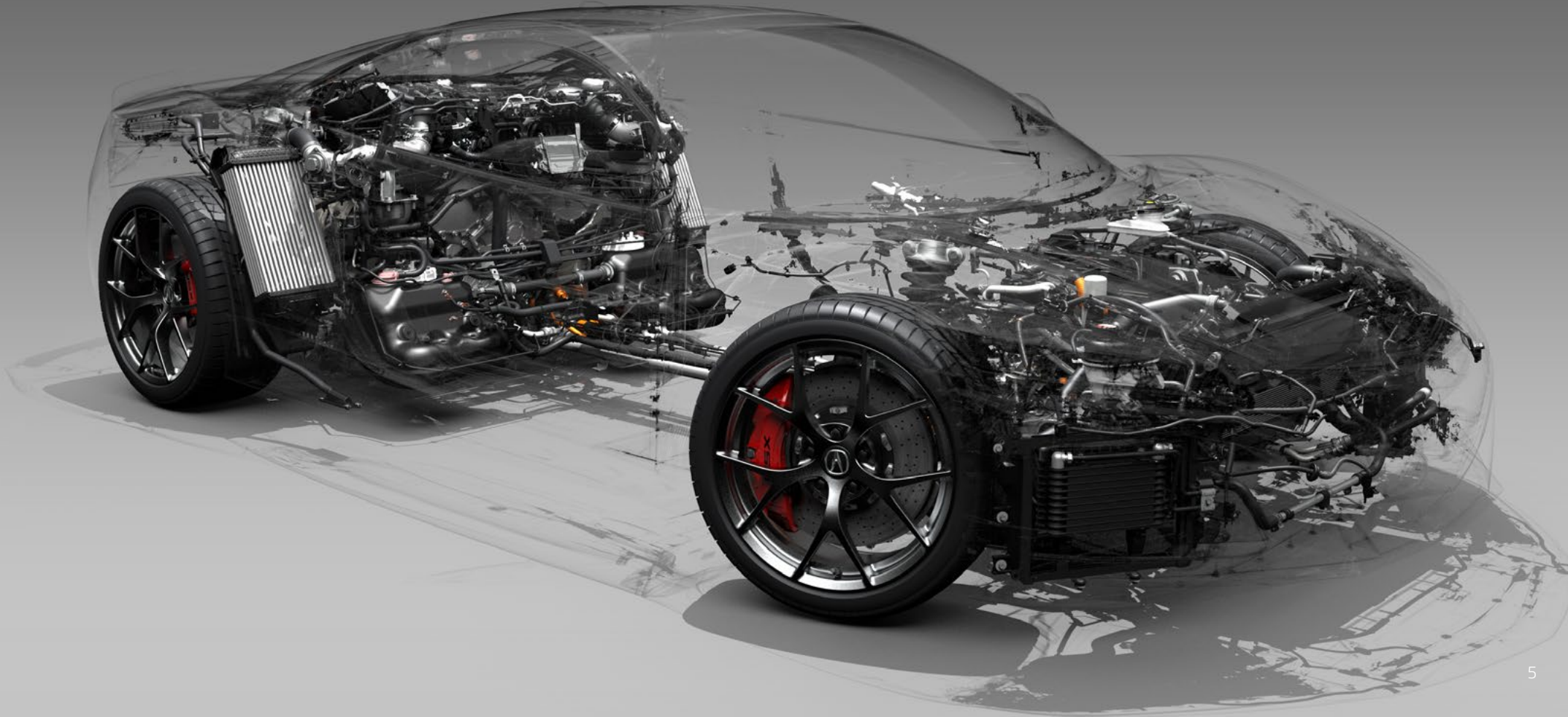
changed. Both automatic and manual modes are available. Upon updating a part, Autopaint can be used to apply the material assignments previously done on the part that was updated. For the automatic material assignment, the material names of the CAD data are used. In case of conflicts DELTAGEN selects one material.



## AUTOMATIC JACKETING

Jacketing detects invisible NURBS faces within a part or an assembly of parts. The faces found are deleted or set to the B-Side, which means that they are kept in the background but are not used for further data preparation. Automatic Jacketing provides suitable meshes for unwrapping and minimizes the number of faces which contribute to the visualization. The

major uses for jacketing are autojacketing, done directly after the import of CAD data on a part level, and jacketing of assemblies, in which several parts are assembled to a group.



## EXTENDING THE REACH OF THE PRODUCT

### ANALYZER

Easily review your product dimensions with ANALYZER. Perform high-level sectioning that includes 3-points definition and move along normals. Use multiple networks for different functional elements.

### XPLORE DELTAGEN

Facilitate the professional presentation of your real-time scene, whether for product reviews or marketing and sales use cases. The multi-touch navigation tool makes interacting with a scene as easy as browsing a web page with full variant control and a wide array of features. XPLORE DELTAGEN ensures a perfect flow to your presentations and seamless interaction with your audience. Direct control of the scene displayed considerably facilitates validation processes and speeds up decision-making.

### SDK for DELTAGEN

Move beyond the standard feature set of DELTAGEN by developing your own tailor-made extensions. With the Software Development Kit (SDK) for DELTAGEN, you adapt existing features and develop new customized plug-ins to integrate the product further into your enterprise workflow - independently of the general development roadmap.



# SYSTEM REQUIREMENTS

These requirements represent the capacity required to run DELTAGEN and DELTAVIEW and also for processing the 3D scenes that will be loaded.

Only NVIDIA pro graphics cards are currently capable of displaying all visual effects and shaders created with our software. This cannot be guaranteed with graphics cards from other manufacturers.

For constantly updated information go to: [SUPPORT.3DEXCITE.COM](http://SUPPORT.3DEXCITE.COM)

## Hardware requirements

Type	Minimum	Recommended
RAM	3 GB	24 GB
CPU	Intel Xeon DP or MP, Intel Core 2 Duo / Quad / Extreme	Intel Xeon E5-2670
GPU	NVIDIA Quadro K5000 NVIDIA Quadro K5200	NVIDIA Quadro K6000 and NVIDIA Quadro M6000 (additional QuadroSync add-on card for Powerwall setup)

## Operating system

Component	Minimum	Recommended
DELTAGEN 2017	Windows 7 x64 Win update KB2999226 for Stellar	Windows 7 x64

## Monitor resolution

Component	Minimum	Recommended
DELTAGEN 2017	1280 x 1024	1920 x 1200

## Recommended drivers

Component	NVIDIA driver	Certification document
DELTAGEN 2017	NVIDIA driver recommendations available on our Software Services website <a href="http://support.3dexcite.com">support.3dexcite.com</a>	Available upon request

## Additional software

Component	Minimum requirements
DELTAGEN 2017	Adobe Flash Player 20 or higher  (for DELTAGEN Flash Video Texture, PICTUREBOOK Browser, XPLORE)  Apple QuickTime Player (for QuickTimeVR export)  Internet Explorer 10 or higher
DELTATEX	Adobe Flash Player 20 or higher

**Our 3DEXPERIENCE® platform powers our brand applications, serving 12 industries, and provides a rich portfolio of industry solution experiences.**

Dassault Systèmes, the 3DEXPERIENCE® Company, provides business and people with virtual universes to imagine sustainable innovations. Its world-leading solutions transform the way products are designed, produced, and supported. Dassault Systèmes' collaborative solutions foster social innovation, expanding possibilities for the virtual world to improve the real world. The group brings value to over 190,000 customers of all sizes in all industries in more than 140 countries. For more information, visit [www.3ds.com](http://www.3ds.com).

